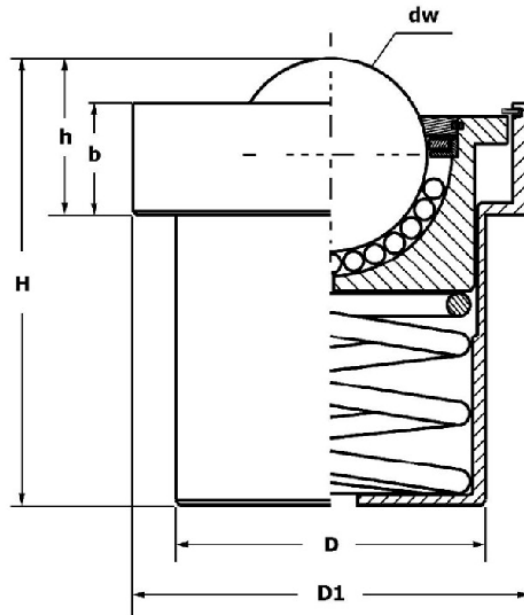


SPRING LOADED SPM HEAVY DUTY



- External housing machined from rod and burnished steel
- This type guarantees consistency and keeps the main characteristics with use avoiding inflections typical of the pressed metal sheet
- Fully machined, hardened and zinc plated steel inner ball transfer unit
- Felt sealing system and drain hole at the bottom
- Hardened and grinded spiral spring
- Lockage of the ball transfer unit by means of the removable fixing ring, for facultative maintenance and/or replacement of the inner spring

SPM –HEAVY DUTY TYPE SPRING LOADED

Article	Type	Information	Dimensions						Load. capacity kg	Preload kg	Tolerance %	W. kg
			d _w	D	D1	h	H	b				
SPM02200AF	SPM 22 AF	Housing burnished steel,	22	39 ± 0,1	50	18,5	58	14	80	7,5	+25/-7,5	0,36
SPM03000AF	SPM 30 AF	body zinc plated steel	30	48,5 ± 1,2	62	24,5	70	17,5	150	13,5	+15/-7,5	0,68
SPM04500AF	SPM 45 AF	Balls in AISI 52100	45	66,5 ± 1,5	85	36	100,5	25,5	215	23	+15/-7,5	1,90
SPM02200CF	SPM 22 CF	Housing burnished steel	22	39 ± 0,1	50	18,5	58	14	80	7,5	+25/-7,5	0,36
SPM03000CF	SPM 30 CF	body zinc plated steel	30	48,5 ± 1,2	62	24,5	70	17,5	150	13,5	+15/-7,5	0,68
SPM04500CF	SPM 45 CF	Balls in AISI 420C	45	66,5 ± 1,5	85	36	100,5	25,5	215	23	+15/-7,5	1,90