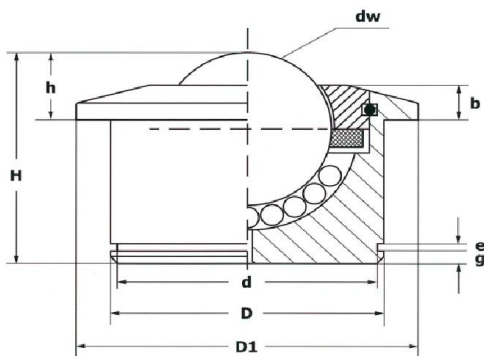


SPM heavy duty type with flange



Type	g	d	e
SPM 15	2	22,09 +0,1 -0,2	1,3 +0,1 -0
SPM 22	3	34 +0 -0,25	1,85 +0,1 -0,2
SPM 30	4	42,5 +0 -0,25	1,85 +0,1 -0,37
SPM 45	4,5	59 +0 -0,3	2,15 +0,1 -0

Housing with flange made of machined from rod and hardened steel, to guarantee high loading capacities and a better resistance to strong conditions.

Insert clip on the housing for the insertion of ixing rings according to DIN 471 standards.*

Reinforced cover cap made of machined steel (SPM 15 made of pressed metal sheet)

Felt sealing system (except for SPM 15)

Drain hole at the bottom.

All the listed types can be manufactured even with the big ball in plastic material.

* If required insert clip can be manufactured with different dimensions and heights.

** For the technical details, please check the data sheet at page 11

SPM heavy duty type with flange and seeger insert clip according to DIN 471

Article	Type	Version	Dimensions						Loading-capacity		Weight kg
			d _w	D	D1	h	H	b	↑	↓	
SPM01500AR	SPM 15 A-R	Body made of steel, balls made of AISI 52100 chrome steel	15	24 ± 0,08	31	9,5 ± 0,2	21	5,5	50	35	0,060
SPM02200AR	SPM 22 A-R		22	36 ± 0,08	45	9,8 ± 0,2	30,5	4	180	125	0,185
SPM03000AR	SPM 30 A-R		30	45 ± 0,08	55	13,8 ± 0,3	36,8	8,5	350	250	0,355
SPM04500AR	SPM 45 A-R		45	62 ± 0,1	75	19 ± 0,4	53,5	10	600	430	0,990
SPM01500BR	SPM 15 B-R	Body made of zinc plated steel, balls made of AISI52100 chrome steel	15	24 ± 0,08	31	9,5 ± 0,2	21	5,5	50	35	0,060
SPM02200BR	SPM 22 B-R		22	36 ± 0,08	45	9,8 ± 0,2	30,5	4	180	125	0,185
SPM03000BR	SPM 30 B-R		30	45 ± 0,08	55	13,8 ± 0,3	36,8	8,5	350	250	0,355
SPM04500BR	SPM 45 B-R		45	62 ± 0,1	75	19 ± 0,4	53,5	10	600	420	0,990
SPM01500CR	SPM 15 C-R	Body made of zinc plated steel, balls made of AISI 420C stainless steel	15	24 ± 0,08	31	9,5 ± 0,2	21	5,5	40	25	0,060
SPM02200CR	SPM 22 C-R		22	36 ± 0,08	45	9,8 ± 0,2	30,5	4	130	90	0,185
SPM03000CR	SPM 30 C-R		30	45 ± 0,08	55	13,8 ± 0,3	36,8	8,5	240	170	0,355
SPM04500CR	SPM 45 C-R		45	62 ± 0,1	75	19 ± 0,4	53,5	10	400	280	0,990
SPM01500SSR	SPM 15SS-R	Body, components and all the balls made of AISI 420C stainless steel	15	24 ± 0,08	31	9,5 ± 0,2	21	5,5	40	25	0,060
SPM02200SSR	SPM 22SS-R		22	36 ± 0,08	45	9,8 ± 0,2	30,5	4	130	90	0,185
SPM03000SSR	SPM 30SS-R		30	45 ± 0,08	55	13,8 ± 0,3	36,8	8,5	240	170	0,355
SPM04500SSR	SPM 45SS-R		45	62 ± 0,1	75	19 ± 0,4	53,5	10	400	280	0,990